



Leytonstone
SCHOOL

Year 10 Partnership Evening

2022-2023

Julia Westbrook
Head of Year 10

What is the purpose of this evening?

- Vision for Year 10
- Pastoral Information
- Introduction to English, Maths, Science and RE (core)
- Important Dates
- Q&A



Year 10: 'Write your own story'

- ❖ The blank page...
- ❖ Seizing the opportunity
- ❖ Be the person you want to be
- ❖ How do you want to be remembered?



Pastoral Information

Form Tutors

10M Mr John Stephens/Ms Sabreen Raja
Middleton

10W Ms Gurjit Bansal/Ms Laura

10F Mr Syed Mafique

10L Ms Sarah Conwell

10R Ms Muhuba Mahamud

10T Mr Andy Dean

10S Mr Sylvain Savier

Monday	Professional Performance and Learning Behaviours
Tuesday	Assembly
Wednesday	Preparing for Next Steps
Thursday	Habits of Discussion
Friday	Getting to Know You



Massolit



- Massolit is a new, exciting learning platform
- Massolit works with university academics to produce high-quality, bite-sized video lectures
- There are individual lectures and courses for various topics
- Student subscription includes: **English Literature and History**
- English and History teachers will include video lectures as 'Cover to Cover'

Login: Username : <school google email address>

Password : Massolit (with a capital M)



Leytonstone
SCHOOL

Jack Petchey 'Speak Out' Challenge

- ❑ Jack Petchey's "Speak Out" Challenge! is a programme delivered by Speakers Trust, the UK's leading public speaking organisation and is supported and funded by the Jack Petchey Foundation. It gives free communication skills training to Year 10 students in every state school in London and Essex.
- ❑ The aim is to amplify young people's voices by creating a platform for them to share their stories and ideas to empower not only themselves but each other.
- ❑ This year 60 students will be given the opportunity to develop their public speaking skills in a full day's workshop (**19th/20th October**) with an external speaker.
- ❑ Pupils play games to boost their confidence before drafting and performing a speech to their small group.
- ❑ Later, the school will select a winner to represent Leytonstone School at the Waltham Forest Regional Final (**29th November**) which our school will be hosting this year.
- ❑ We are hoping to continue the success we had last year when Maya Redley was placed 4th out of 20,000 students with her speech on Rapunzel, Race and Representation.



English	AQA
Maths	Edexcel
Science	AQA
RE	AQA
French	AQA
Spanish	AQA
Geography	Edexcel A
History	Edexcel
Sociology	AQA

Drama	AQA
Art	AQA
Music	Eduqas
Technology	WJEC Eduqas
PE	AQA
Computer Science	OCR
Business Studies	Pearson
Health and Social Care	Pearson



Religion, Philosophy and Ethics

scasey@leytonstoneschool.org

GCSE Religious Studies A

8062

Paper 1: The study of religions:
Beliefs, teachings and practices.
Hinduism and Christianity

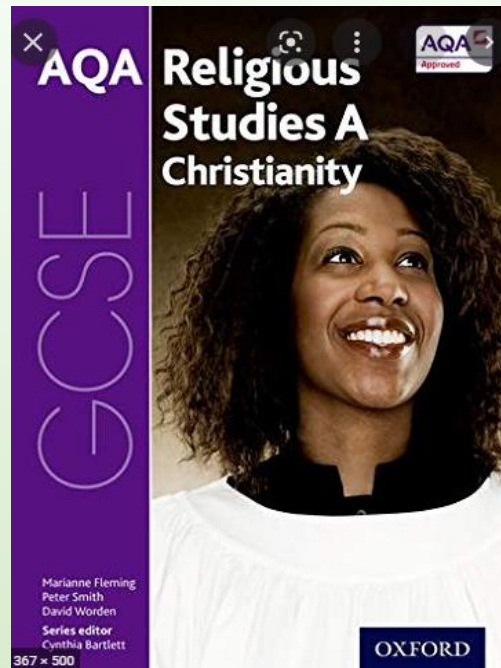
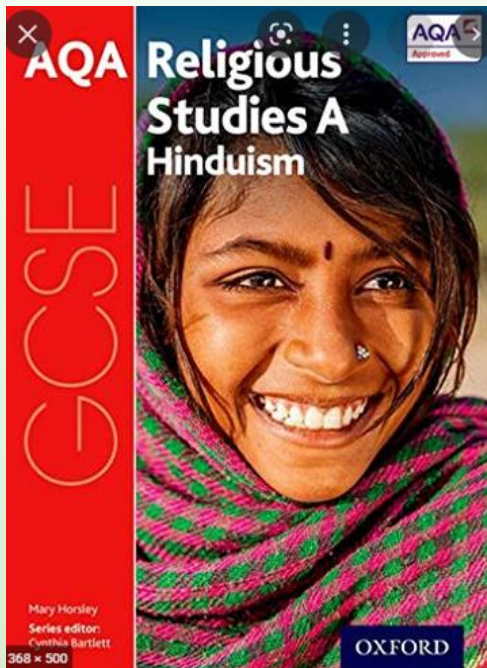
Paper 2: Thematic studies

**Written exam: 1 hour
45 minutes**

Paper 1: 96 marks plus
6 for spelling,
punctuation and
grammar.

Paper 2: 96 marks plus
6 for spelling,
punctuation and
grammar.

- 1) Crime and Punishment
- 2) Human Rights and Social Justice
- 3) Relationships and Families
- 4) War and Peace



Leytonstone
SCHOOL

English Language 8700/01 & 8700/02

Paper One: Explorations in Creative Writing

- Written exam: 1 hour 45 minutes
- Total: 80 marks
- 50% of Language GCSE

Section A Reading (40 marks) (25%)

1. List 4 things from the text (4 marks)
2. Analyse the writer's use of language (8 marks)
3. Analyse the writer's use of structure (8 marks)
4. Evaluate with a critical voice (20 marks)

Section B: Writing (40 marks) (25%)

5. Write to describe or Narrative (24 marks for content, 16 marks for technical accuracy)

Paper Two: Writers' Viewpoints and Perspectives

- Written exam: 1 hour 45 minutes
- Total: 80 marks
- 50% of Language GCSE

Section A: Reading (40 marks) (25%)

1. Identify 4 'true' statements (4 marks)
2. Write a summary about the two extracts (8 marks)
3. Analyse the writer's language choices (12 marks)
4. Compare how the writers convey their different ideas and perspectives (16 marks)

Section B: Writing (40 marks) (25%)

- Write to argue, persuade, inform or explain (24 marks for content, 16 marks for technical accuracy)

AQA

SPECIMEN MATERIAL 1

Please write clearly in black capital letters.

Centre number

Candidate number

Subject

Field of study

Candidate signature

GCSE

ENGLISH LANGUAGE
(8700)

Paper 1 Explorations in creative reading and writing

Time allowed: 1 hour 45 minutes

Materials

For this paper you must have:

- Material A is provided within the question paper.

Instructions

- Answer all questions.
- Use black ink or black ball-point pen.
- Fill in the boxes on this page.
- You must answer the questions in the spaces provided.
- Do not write outside the lines around each page or on blank pages.
- On all rough work in this book, cross through any work you do not want to be marked.
- You must refer to the instructions provided.
- You must provide a declaration.

Information

- The marks for questions are shown in brackets.
 - The maximum mark for this paper is 80.
 - There are 40 marks for Section A and 40 marks for Section B.
 - You are assessed on the basis of good English and clear presentation in your answers.
 - You will be assessed on the quality of your writing in Section A.
 - You will be assessed on the quality of your writing in Section B.
- Advice**
- You are advised to spend about 15 minutes reading through the paper and writing questions you have to answer.
 - You should make sure you have sufficient time to check your answers.

8700/01



Leytonstone
SCHOOL

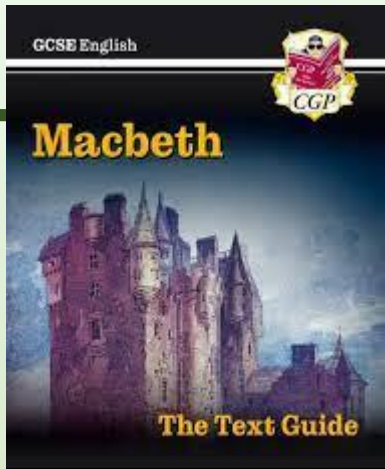
English Literature 8702/1 & 8702/2

Paper One: Shakespeare and the 19th century novel

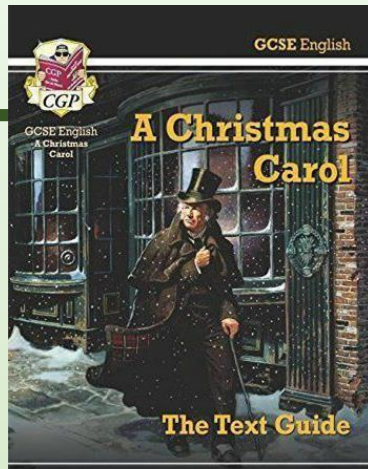
- Written exam: 1 hour 45 minutes
- Total: 64 marks
- 40% of Literature GCSE

Section A Shakespeare: Macbeth (34 marks)

Section B The 19th-century novel:
A Christmas Carol (30 marks)



Includes Free Online Edition & Digital Quizzes



For all GCSE English courses — including the new exams from 2017

Paper Two: Modern Texts and Poetry

- Written exam: 2 hour 15 minutes
- Total: 96 marks
- 60% of Literature GCSE

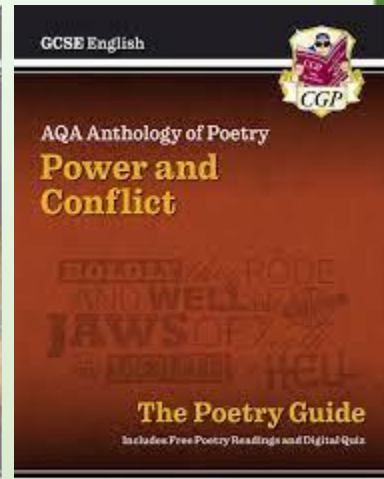
Section A Modern texts: Animal Farm (34 marks)

Section B Poetry: Power and Conflict Comparison (30 marks)

Section C Unseen poetry:
Analysis of Unseen poem (24 marks)
Comparison of unseen poems (8 marks)



Includes Free Online Edition & Digital Quizzes



The Poetry Guide
Includes Free Poetry Readings and Digital Quiz

Materials

- For this paper you must have:
- an AQA 16-page Answer Book.

Instructions

- Use black ink or black ball-point pen. Do not use pencil.
- Write the information required on the front of your answer book. The **Paper Reference** is 8702/1.
- Answer **one** question from **Section A** and **one** question from **Section B**.
- You must **not** use a dictionary.

Information

- The marks for questions are shown in brackets.
- The maximum mark for this paper is 64.
- AO4 will be assessed in **Section A**. There are 4 marks available for AO4 in **Section A** in addition to 30 marks for answering the question. AO4 assesses the following skills: use a range of vocabulary and sentence structures for clarity, purpose and effect, with accurate spelling and punctuation.
- There are 30 marks for **Section B**.

FAQs

Language

Q: How many papers are there?

A: 2 for Language

Q: What are the grade boundaries?

A: 80/160 for Grade 5, then approximately 10 marks per grade (subject to change)

Q: How do I help my child revise for English Language?

A: Time them when they complete past papers, encourage them to read their descriptions/ stories aloud, encourage them to read non-fiction articles.

Q: Should my child start from Q5 as it has more marks?

A: This should be avoided unless it has been discussed and explicitly advised by your child's teacher.

Q: What happens if my child does not achieve a grade 4?

A: They will need to resit in at the college/ sixth form they attend post GCSE.

Literature

Q: How many papers are there?

A: 2 for Literature

Q: What are the grade boundaries?

A: 83/160 for Grade 5, then approximately 15 marks per grade (subject to change)

Q: How many poems does my child need to know?

A: There are 15 in the cluster, different poems link to one another thematically, we do not know which poem will appear in the question so it is important all students have a good understanding of the whole cluster.

Q: How do I help my child revise for English Literature?

A: Encourage them to go over classwork/ notes, turn content into revision cards, create essays for a variety of practice questions, stick quotations up all around the home.

Q: Will my child have the text in the exams?

A: For the most part, no. Some questions will provide an extract but the exam relies heavily on having good knowledge of the text and memorised quotations.

Why Triple Science?

We believe that the Triple Science pathway will better prepare you for A-level Sciences and give you the best chance of accessing further science courses. All students will be entered for triple science, where possible.



Triple Science- Higher

Triple Pathway

Three separate GCSEs Grades 9-4

Examining Board

AQA

Disciplines Studied

Biology, Chemistry and Physics

Examination
Papers

6 Exam papers:

1 hr 45 minutes -100 marks each
B1 and B2 C1 and C2 P1 and P2

Difference
between
combined and
Triple

Triple higher has slightly more content than the foundation tier. The exams have less recall questions and more application ones.



Triple Science- Foundation

Triple Pathway

Three separate GCSEs Grades 5-1

Examining Board

AQA

Disciplines Studied

Biology, Chemistry and Physics

Examination
Papers

6 Exam papers:

1 hr 45 minutes -100 marks each
B1 and B2 C1 and C2 P1 and P2

Difference
between
combined and
Triple

Triple foundation has slightly less content than the higher tier, not a very significant difference. The exams have more recall questions than application ones. They are more accessible than the higher paper.



Entry Level- Double Award



Entry Level
Pathway

Non-GCSE Pathway
Levelled Certificates (1,2,3)

Examining Board

AQA

Disciplines
Studied

Biology, Chemistry and Physics

Examination
Papers

6 Exam papers:
45 minutes – 20 marks each- total weighting 57%
and B2 C1 and C2 P1 and P2 B1

Teacher- devised
Assessment (TDAs)

These are assessments of practical tasks set by the teacher and marked against the marking criteria provided in the Scheme of assessment. Weighting 43%

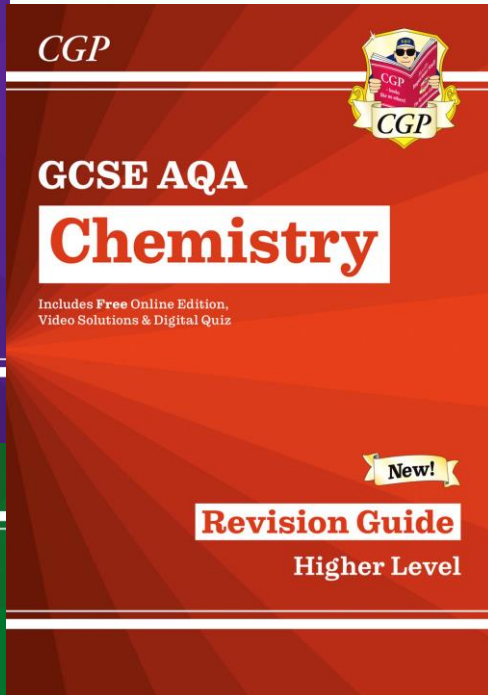
Difference between
GCSE route and Entry
Level

Entry level students are allowed to complete assessments at the end of each unit (externally marked) and also have a practical assessment.



Leytonstone
SCHOOL

Revision and Q&As



Question 1: Will all students be entered for the triple pathway?

Answer: Yes, all students will be entered for the triple award, which means they will get three separate grades. A grade for biology, chemistry and physics.

Question 2: Are year 10 students in mixed ability groups?

Answer: Although all year 10 students are undertaking the triple pathway, we have not started to complete tiered, standardised papers yet. All students are currently completing mixed papers. They are likely to be in sets during the spring term, after they sit the first standardised paper.

Question 3: How is homework set in science?

Answer: Year 10 homework is their revision for the end of half-term assessment. It is essentially a staggered revision schedule based on older and current topics. They have Seneca assignments and a half-termly exam booklet, with labelled weekly questions. They are advised to complete the homework during their pledged science days.

Question 4: How can I help my child to revise science?

Answer: A combination of content recall and exam practice is the best way. Here is a link to a loom video made by Ms. Doukani for students about using the revision clock method for recall:

Link: <https://www.loom.com/share/9e56afb427a9431a9d307fec58e6572e>

If you have further questions about science, please e-mail the HoD;
Kdoukani@leytonstoneschool.org

Maths

Exam Board - Edexcel

There are 2 tiers in Maths at GCSE level, Higher and Foundation.

Pupils have been initially put into certain tiers based on their performance in Year 9 along with discussions within the Maths team.

During the first half term, all Year 10 Maths classes will be covering exactly the same content.

In the WB 3rd Oct pupils will sit a diagnostic assessment as a part of Edexcel's 'Mathematics Enhanced Tiering Support' which will support the Maths team in ensuring your child is initially in the correct tier.

These will be reviewed on a regular basis.



I asked the students:
***What can you do to
improve your mental health?***

1. Limit your screen time!

- Get a peaceful, uninterrupted sleep

2. Take advantage of fresh air when you can

- Break, lunch, walking to/from school

3. Speak to someone when things are getting too much

- Adult; or a trusted friend



How can you support your child this year?

- Stick to routines – consistent bedtime, limit the screen time!
- Start the professional dialogue - engage with your child about their studies
- Research colleges and universities together so it feels like a team effort
- Track their well-being; let us know if anything concerns you

Contact us!

- 10M istephens@leytonstoneschool.org and sraja@leytonstoneschool.org
- 10F smafique@leytonstoneschool.org
- 10R mmahamud@leytonstoneschool.org
- 10S ssavier@leytonstoneschool.org
- 10W gbansal@leytonstoneschool.org and lmiddleton@leytonstoneschool.org
- 10L sconwell@leytonstoneschool.org
- 10T adean@leytonstoneschool.org



Year 10 Important Dates 2022/23

November 2022	TBC- College Roadshow
December 2022	8th and 9th - Panto in a Hurry 16th - Last day of Term
January 2023	3rd - INSET Day
February 2023	10th - Last day of half term 20th - Back to school
March 2023	30th- Year 10 Parent/Carer Evening 31st - Last day of Term
April 2023	17th INSET Day
May 2023	1st May Day holiday 26th - Last day of Term
June 2023	5th - Back to school
July 2023	20th - Sports Day 21st - Last day of Term

